

# ARCHITECTURE

EHLINGER & ASSOCIATES

FIRST QUARTER 2001



SHADOWS ON THE TECHE

This issue's limited edition print of *Shadows on the Teche* by Ladd P. Ehlinger, is one of the most unique and architecturally powerful of all of the Louisiana plantation homes. This home was begun by David Weeks, an American planter, in 1831 and completed in 1835. It was built on a small plantation, most of which was on the opposite bank of Bayou Teche and has been sold off. The house now is within the town limits of New Iberia. It is now owned and has been restored by the National Trust for Historic Preservation and is well worth seeing. The National Trust acquired the *Shadows* from Weeks Hall, a descendent of the original builder in the early 1960's.

David Week's father was an English immigrant who received his first Spanish land grant in 1792. He operated several plantations in southern Louisiana, the most notable of which was on Week's Island. Week's Island is one of several salt domes which arise out of the Louisiana coastal marsh as huge hills of thousands of acres of dry land with unique local environments. The domes are all in a row geologically and were

created by the overburden of silt from the Mississippi River squeezing up the strata below. The most famous of the domes is Avery Island, where Tabasco was invented and is still manufactured today. Jefferson Island is another salt dome of some notoriety also. This one contained an underground salt mine that was punctured during directional drilling by a Texaco drilling rig operating in a nearby lake, draining the lake and flooding the mine within a few hours in the early 1980's.

The *Shadows* is a French Provincial Louisiana plan (or Creole plan) with an American facade expression. The plan has no hallways, which was

typical of the Creole planter's homes at the time. The usual exterior expression of the Creole planter's homes differed markedly from the *Shadows* as they usually had wooden columns on the second level as the masonry terminated at that level. This gave the Creole planter homes a lighter and less impressive appearance than the *Shadows*.

The ground floor consisted of a Servants Room, Work Shop, Drawing Room, Dining Room and Kitchen with an exterior Loggia, which has three well proportioned arches that support a second floor porch above that overlooks Bayou Teche. The second floor also contained a Studio, two Bedrooms and a bath.

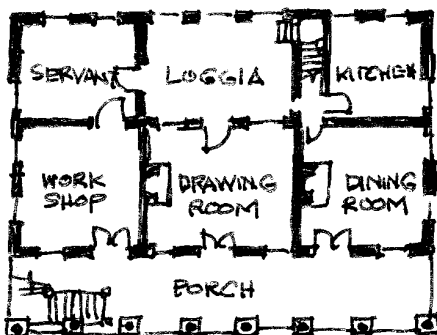
The *Shadows'* grounds contain numerous live oaks and other indigenous trees draped with lots of Spanish moss that create the shadows that engendered the name. The gardens have been restored also.

## WELCOME ABOARD!

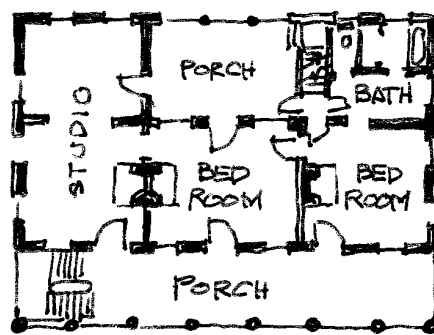
Merle E. Hall, Jr. has joined E&A's Huntsville office as a draftsman. Merle brings many years of construction experience as a contractor, proficient in many trades personally (carpentry, acoustical ceilings, dry wall, plastering, masonry, cabinet making, roofing and concrete finishing) in Alabama, California and Hawaii. His experience ranges from remodelings to historic preservation to new construction.

He is proficient in AutoCad having attended MTI College in Orange, CA where he learned drafting and how to put computer systems as well as buildings together. Merle is married and has two children. His son is a musician and his daughter is still in college.

Reanell Hollie Eschette has joined E&A's New Orleans office as an intern architectural engineer. She recently graduated from University of Southern Mississippi with a Bachelor of Science in Architectural Engineering and minors in



FIRST FLOOR PLAN



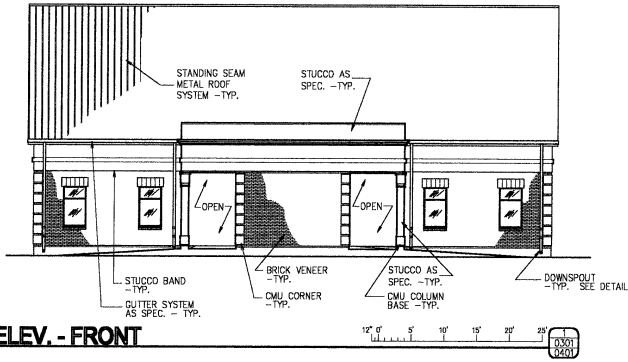
SECOND FLOOR PLAN

computer science and construction engineering technology. She was a student member of Construction Specifications Institute, SWE, AIBD, NAHB, and Sigma Lambda Chi Honor Society. Renell is a native of New Orleans and grew up in Hammond, LA.

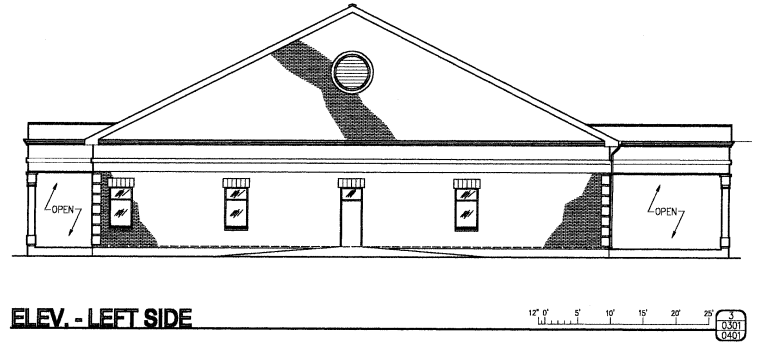
## Gretna Community Center

E&A recently contracted with Jefferson Parish to design the Gretna Community Center for District 1 for Councilman T. J. "Butch" Ward. This is the third center that E&A has designed for Jefferson Parish. This center has a more traditional appearance than the oth-

ers and can be seen below. Construction is a ground supported concrete slab on grade, light gauge steel stud, joist and rafter framing, metal decking, standing seam metal roofing over rigid board insulation with brick veneer and stucco accent panels.



ELEV. - FRONT



ELEV. - LEFT SIDE

