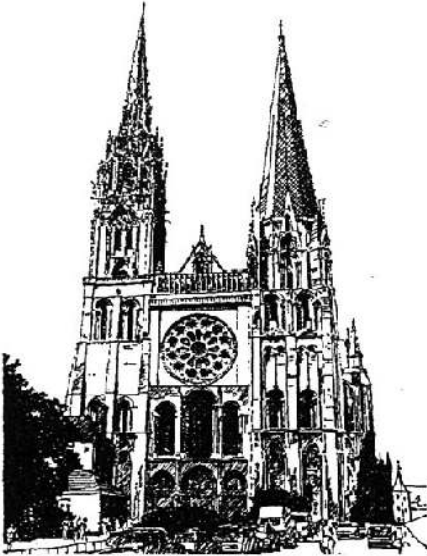


# ARCHITECTURE

EHLINGER & ASSOCIATES

SECOND QUARTER 1993



## CHARTRES CATHEDRAL

This issue's limited edition signed print by Ladd P. Ehlinger is of the West facade of Chartres Cathedral in France. Chartres was the location of the shrine of the *Vierge Noire*, and was the focus for pilgrimages from early Romanesque times. The Gothic church present today is built over a Romanesque crypt used for the pilgrimages. Chartres is a small town with no other tall buildings. As such, the Cathedral dominates the town and the countryside.

The nave of the cathedral is short, with very strong transept aisles (crossing aisles). The original plan of the church was to have towers at each of the transepts as well as the crossing and west facade. This was never carried out. But, the spire of the north tower (1507-14) of the west facade (the one on the left in the print) is considered to be one of the most beautiful in Europe, even though it contrasts and does not match the earlier southern tower (1145-70).

The chevet (the part east of the crossing) is the portion built over the crypt of the older church. There are cir-

cular radiating chapels around the hemisphere of the chevet. The nave has circular columns encircled with four circular columnets, a progression of the Norman style. The columns are part of a composition of arcade, triforium, clear-story of two-light pointed windows crowned by a quadripartite vault that is 120 feet high. This vault is in an oblong shaped bay, the first time that a square bay was not used in a Gothic church.

The stained glass, which dates from the thirteenth century, fills one hundred and sixty windows and is thought to be the most remarkable in all of France. The sculptures of the portals over the west doorways and of the north and south transepts are also of exceptional quality. The flying buttresses are of unusual composition, being layered and connected by radiating balusters, much like the spokes on a wheel.

## NEW STUDENT SERVICES AND CLASSROOM BUILDING DELGADO WEST BANK CAMPUS

E&A has completed the Schematic Design for the New Student Services and Classroom Building for Delgado Community College's West Bank New Orleans Campus. The site for this building is next to the Naval Support activity on the Mississippi River across from downtown.

The program for this \$2.8 million facility is complex:

The first floor contains administrative facilities: Dean's Office, Bursar's Office, Registrar's Office, Financial Aid Office, a Bookstore, Conference Classroom, 3 Tiered Classrooms that open to each other, forming a theatre-in-the-round, Restrooms, and Mechanical and Electrical services & entrance.

The second floor contains 12 Classrooms of varied sizes, Faculty Offices, Faculty Chairman's Office, and main Restrooms.

The third floor contains the Library, Librarian's Office, and two Conference/Classrooms, all with a magnificent view of the Mississippi River. Restrooms and Work Rooms are provided. In the third level attic are the Mechanical systems serving the second and third floors.

The structure of the building is a reinforced concrete waffle slab system on levels two and three, with the highest roof over the library being clear spanned by a laminated wood truss system. Exterior walls are Exterior Insulation and Finish System (EIFS, a synthetic stucco) applied to a metal stud system and Concrete Masonry Unit interior walls, painted, and with ceramic tile in corridors. The foundation is a pile supported structural concrete slab. The roof is a standing seam metal type.

See the second page of the Newsletter for the drawings of this building.

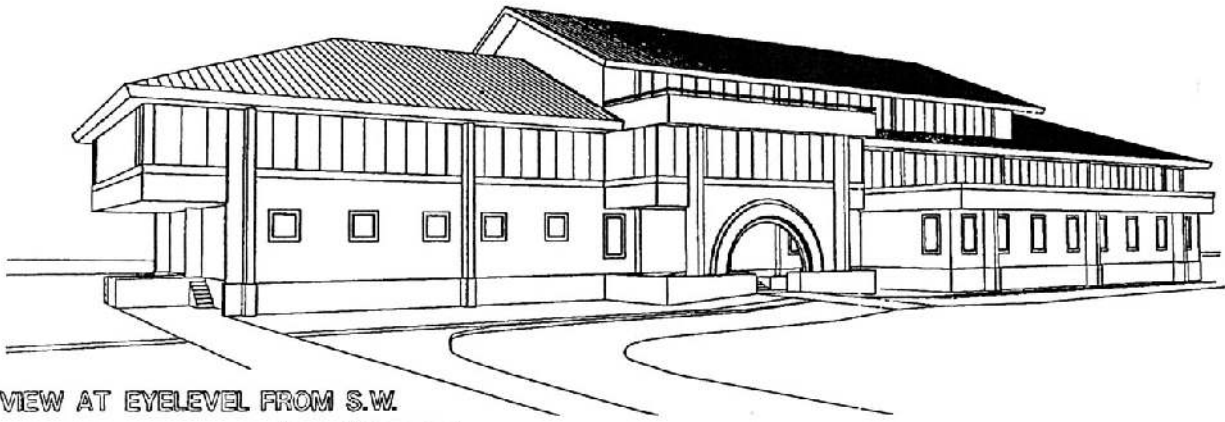
## E&A FEATURE ARCHITECT

Darrell J. Young is this issue's feature architect. Darrell is an intern architect, having graduated in 1992 from Tulane University with a Bachelor of Architecture. Darrell has a lot more experience than this brief description would indicate as he came to architecture late in his building career. Darrell has over 15 years work experience in the design and building of residential and light commercial buildings.

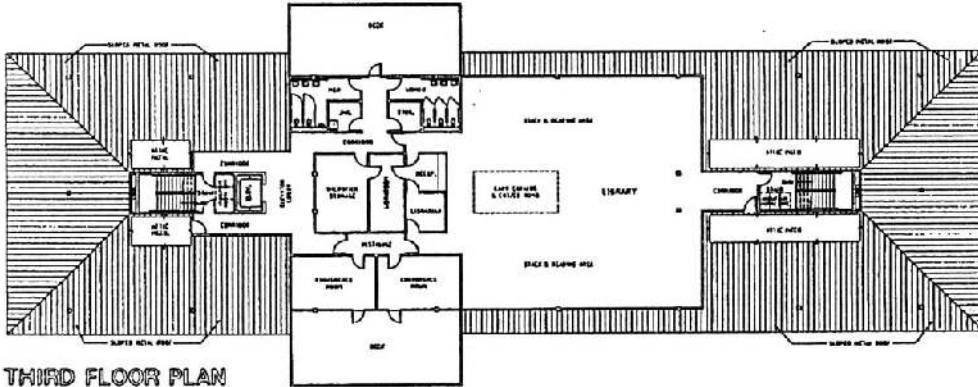
In Darrell's years as a builder, he was involved in the electrical, plumbing, carpentry as well as the management and bidding of the projects that he built. This background has given Darrell a very practical outlook upon the tasks that he has been involved with at E&A in the year that he has been here.

Darrell is married and has one son.

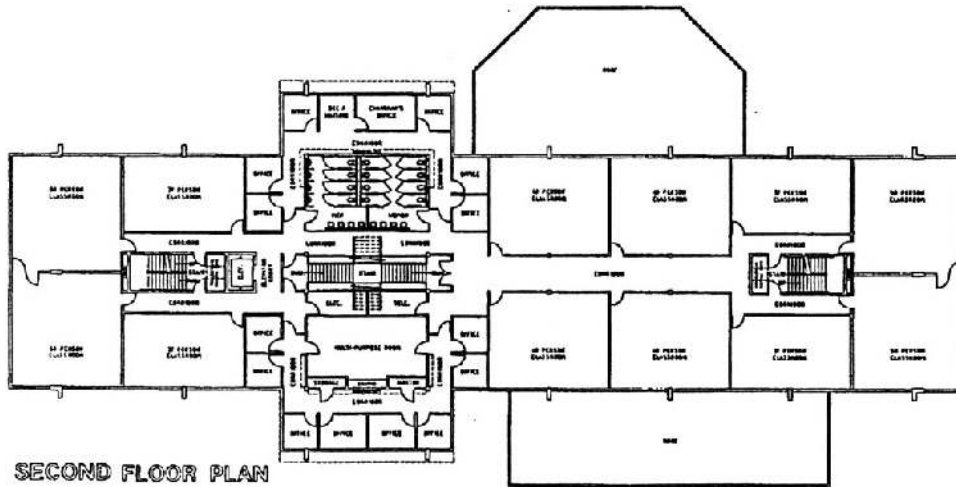
E&A looks forward to Darrell having a long and productive career with the firm, and benefiting from his practical approach to problem solving.



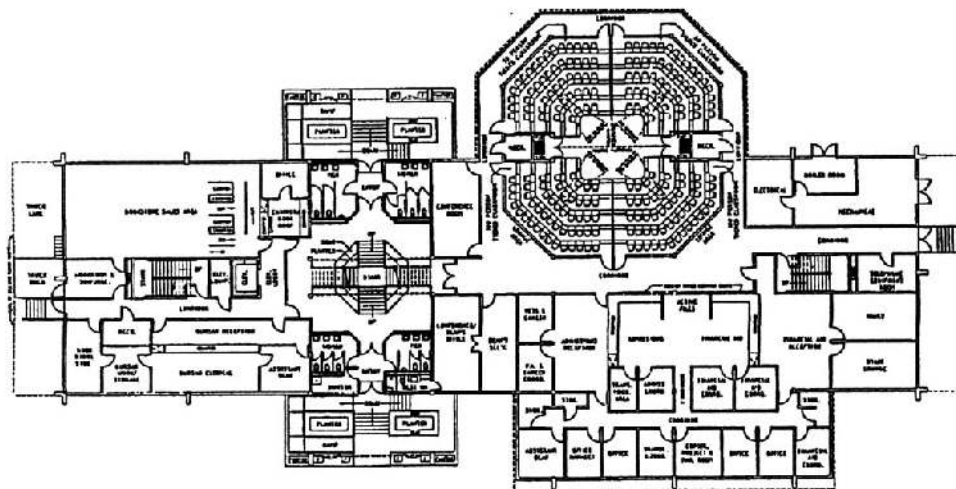
VIEW AT EYELEVEL FROM S.W.



THIRD FLOOR PLAN



SECOND FLOOR PLAN



FIRST FLOOR PLAN